



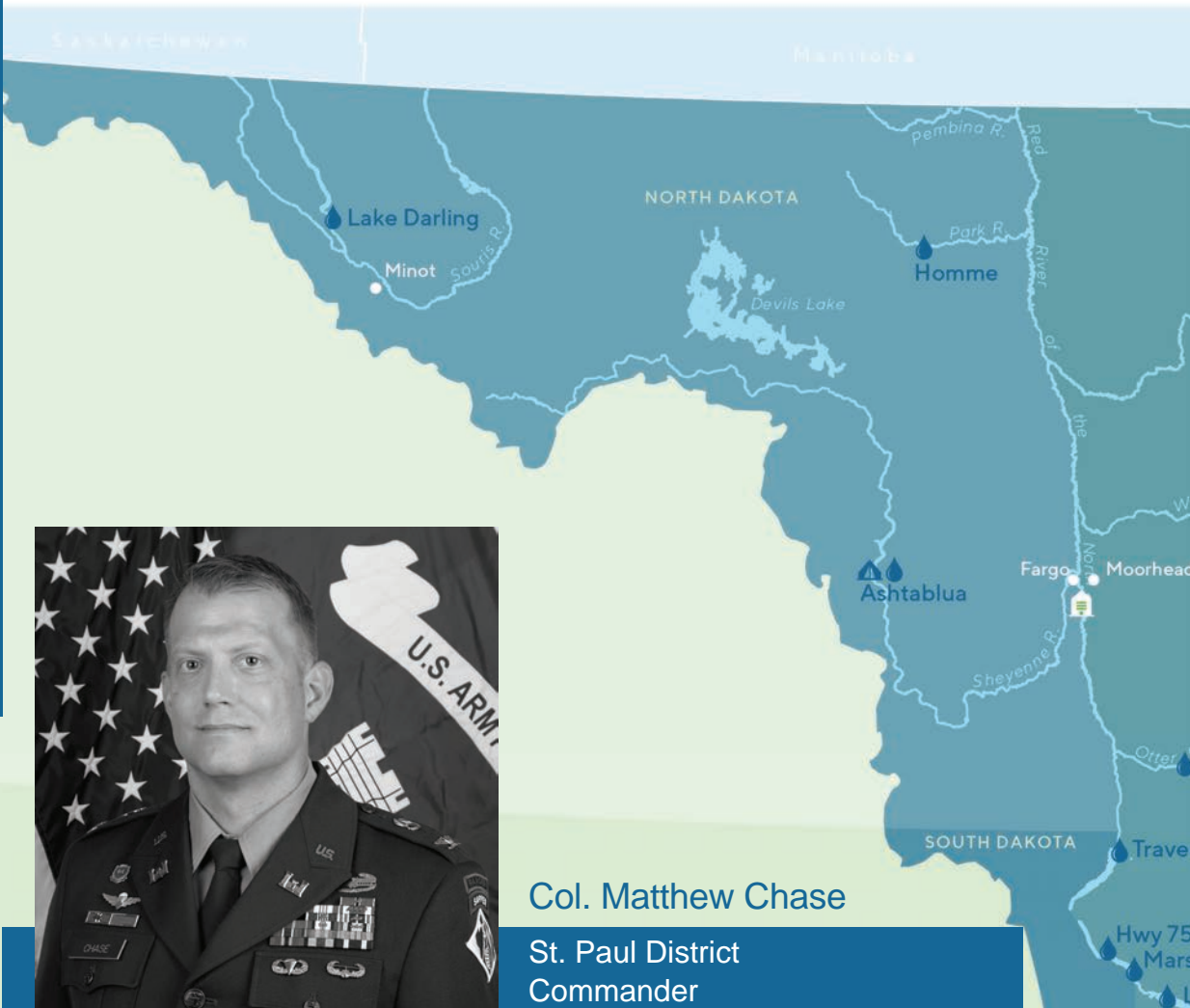
US Army Corps  
of Engineers®  
St. Paul District

# VALUE to the NATION

BUILDING STRONG®

SERVING THE REGION SINCE 1866

11320  
**JLG**



## Col. Matthew Chase

St. Paul District  
Commander

The St. Paul District is where the “Mighty Mississippi River” starts its long journey through the middle of the United States of America to the Mississippi River Delta. The district’s civil works boundaries follow the edges of four river basins - the Mississippi River, the Red River of the North, the Souris River and the Rainy River - and covers an area of approximately 139,000 square miles.

This area includes most of Minnesota, the western half of Wisconsin, the northeastern half of North Dakota and small portions of northeastern South Dakota and northeastern Iowa. The district also shares approximately 500 miles of border with three Canadian provinces. The district’s regulatory borders encompass all of Minnesota and Wisconsin.



The St. Paul District is responsible for supporting inland navigation by managing 13 locks and dams and maintaining the 9-foot navigation channel on the Mississippi, Minnesota, St. Croix and Black rivers. The district builds flood risk management projects to help communities reduce flood damages and operates 16 reservoirs for flood risk management, recreation, fish and wildlife habitat and water supply. It can also assist communities

by responding to floods and other disasters. The St. Paul District provides engineering services to many federal agencies to include the Federal Emergency Management Agency, U.S. Customs and Border Protection and more. It issues permits for work in wetlands and navigable rivers and is responsible for an environmental restoration program to improve fish and wildlife habitat. Additionally, the district maintains 49 recreation areas open to the public.

# Contributing to the Upper Midwest economy



The St. Paul District serves the American public in the areas environmental enhancement, navigation, flood risk management, water and wetlands regulation, recreation and disaster response. Our employees work at 49 sites in five Upper Midwest states. Based on the district's \$303 million budget in fiscal year 2025, it supported nearly 650 Corps jobs and 3,800 non-Corps jobs, as well as added \$817 million to the national economy.

every **dollar** invested  in the Corps' flood risk management program  saves Americans **\$12**

## FLOOD RESPONSE AND RISK MANAGEMENT

Every year, floods sweep through communities across the United States, taking lives, destroying property, shutting down businesses and causing millions of dollars in damage. The Corps **assists communities** in building projects that **reduce risk from floods** while also managing reservoirs designed to **reduce risk**. Additionally, the Corps assists states in reacting to floods when the response required exceeds a state's capabilities. A few examples of where the St. Paul District has built flood risk management projects in Upper Midwest communities include Grand Forks, North Dakota; Mankato, Minnesota; Rochester, Minnesota; and St. Paul, Minnesota.

**SAVED \$19M** In 2021, the St. Paul District flood risk management and emergency response activities

# NAVIGATION



The St. Paul District navigation program provides a safe, reliable, cost-effective and environmentally sustainable waterborne transportation system on the Upper Mississippi River for the movement of commercial goods and for national security needs. To do this, the district maintains a 9-foot navigation channel and 13 locks and dams from Minneapolis to Guttenberg, Iowa. Keeping the nearly 90-year-old system open is vital to the nation's economy. More than 10 million tons of commodities pass through Lock and Dam 10 every year. This includes nearly 8.5 million tons of farm products such as corn and soybeans. Industries making these shipments save approximately \$430 million annually by using the inland waterways instead of overland shipping methods.

## dredged material

**~1M** cubic yards of sand dredged annually  
 enough to fill the Capitol rotunda 21 times



- used for
  - highways
  - beaches
  - habitat projects



The benefits of navigation are many. One 15-barge tow is equivalent to 216 rail cars or 1,050 semis. Shipping bulk commodities on the river reduces wear and tear on America's roads and bridges, but also does so as the most fuel efficient and environmentally friendly transportation mode compared to rail or tractor trailer. Additionally, the St. Paul District dredges around 1 million cubic yards of dredged material, or river sand, from the Minnesota, Black, St. Croix and Mississippi rivers annually. The sand is often beneficially reused for projects that include general purpose construction fill, winter road maintenance, material for island habitat projects along the river and more.



**2.3M** visitors per year to our recreation sites

spend **\$137M** in LOCAL & REGIONAL ECONOMIES

## RECREATION

The St. Paul District operates 49 recreation areas, ranging from public landings along the Mississippi River to lock and dam visitor centers to full-service campgrounds. These recreation areas are an important component of the region's tourism industry, and the impact on the local and regional economies is significant.

# Preserving, restoring and protecting Upper Midwest resources



The St. Paul District recognizes the interdependence of life and the importance of the physical environment and proactively considers environmental consequences of its programs. Our goal is to seek balance and synergy among human development and natural systems by designing economic and environmental-friendly solutions that reinforce one another. Our environmental programs focus on the key areas of ecosystem preservation, restoration and protection.



Helping to sustain aquatic resources for future generations



## FIELD OFFICES

Protecting the nation's aquatic resources and navigation while enabling reasonable development through fair and balanced permit decisions.

evaluates  
**3K**  
REQUESTS  
PER YEAR

helped more than

**50K**

acres of wetlands to be RESTORED & ENHANCED

## REGULATORY

The St. Paul District Regulatory Program is charged with protecting the nation's aquatic resources and navigation while allowing reasonable development through fair and balanced permit decisions that are timely, predictable, transparent, consistent, rooted in sound science and compliant with applicable laws.

The St. Paul District ensures that structures and work in navigable waters and discharges of dredged or fill material in waters of the United States are compliant with federal law in the states of Minnesota and Wisconsin. Regulatory biologists and project managers assist developers and landowners to ensure that development is accomplished in a way that sustains the functions and services of aquatic resources for future generations. Aquatic resources are abundant in Minnesota and Wisconsin, with 25% of the area covered by around 25,000 lakes, 15 million acres of wetlands, and 100,000 miles of streams. The district's wetland mitigation program has contributed to the restoration and enhancement of more than 50,000 acres of wetlands that support important functions such as water quality, recreation, fish and wildlife habitat, water supply and flood risk management.

## NUISANCE SPECIES PROGRAMS

The St. Paul District works hard to combat invasive species on the federal land it manages, as well as routinely partnering with other government agencies on a variety of nuisance species programs. The district's natural resource staff is currently working to remove Black Locust from Corps administered lands and replace it with native vegetation. They also enforce a locally-purchased firewood policy at Corps campgrounds to aid in preventing the spread of Emerald Ash Borer. In the Upper Mississippi River, the district is working with numerous partners to minimize the spread of Asian carp and zebra mussels.

## HABITAT REHABILITATION AND ENHANCEMENT PROJECTS

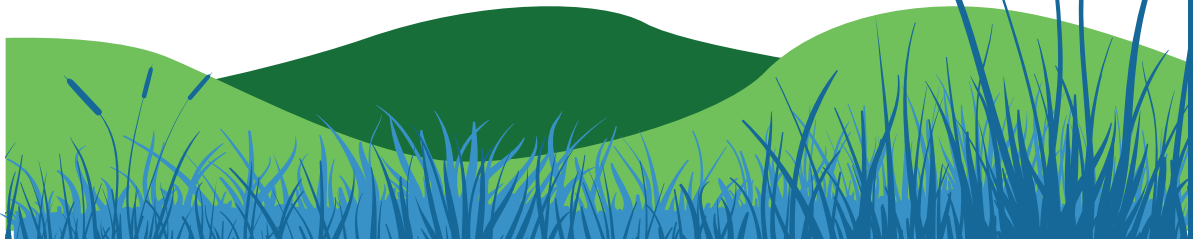
Habitat rehabilitation and enhancement projects are designed to benefit fish and wildlife by restoring lost habitat and/or protecting existing habitat features. Planned and engineered by the Corps of Engineers, partners and the public, these projects include restoring islands, constructing flow control structures or shoreline stabilization features and dredging backwater areas. Most of these projects fall under the nation's Upper Mississippi River Restoration Program. This program is meant to restore, protect and guide future management of the Upper Mississippi River. The district has completed 30 restoration projects, affecting around 50,000 acres, or 78 square miles, of river and floodplain habitat. Additionally, these projects often beneficially reuse sand dredged from the navigation channel.

## STEWARDSHIP OF PUBLIC PROPERTY

It is the policy of the St. Paul District to apply principles of good environmental stewardship to the natural and cultural resources located on Corps-managed lands. The district manages more than 77,000 acres of land and more than 400,000 permanent easements across the Upper Midwest - an area equivalent to around 745 square miles. On these lands, the district's natural resources staff is responsible for grassland, fisheries, forest and wetland management; regulating public use; managing water levels; establishing and enhancing vegetation; shoreline stabilization and more. The staff closely coordinates all of its activities on its river lands with other federal and state natural resource agencies.

## ENVIRONMENTAL INFRASTRUCTURE PROJECTS

The St. Paul District's environmental infrastructure programs assist rural communities with building, designing and/or restoring environmentally friendly water supply and wastewater treatment systems. As of 2025, the district has assisted more than 56 communities in building projects. The total cost for these projects was approximately \$94 million.



# Supplying healthy, accessible, outdoor recreational activities



The Corps of Engineers is one of the nation's leading federal providers of outdoor recreation. Visitors of all ages can enjoy traditional activities like hiking, boating, fishing, camping, hunting and more. We are also committed to providing a safe, fun and secure experience for our visitors. With 90 percent of our recreation areas located within 50 miles of a metropolitan area, there is a Corps site near you. We invite you to visit us!

The St. Paul District operates 49 recreation areas throughout the Upper Midwest, ranging from public boat landings along the Mississippi River in Pools 9 and 10, to full-service campgrounds. As a steward of public lands, the St. Paul District has a responsibility to assure accessibility for today and tomorrow while providing high-

quality outdoor recreational opportunities for everyone. The St. Paul District manages approximately 28,500 acres of fee title land above the summer water levels and more than 447,000 water surface acres. From fishing to camping, hiking and boating, there is wide a variety of recreational opportunities available for your next adventure.



650  CAMPSITES

27  BOAT LAUNCH RAMPS

10  BEACHES

49  RECREATION AREAS



# Did you KNOW?

The Mississippi River drops 860 feet from the headwaters of the Mississippi to Lock and Dam 10 in Guttenberg, Iowa.

That is almost the height of three Statues of Liberty.



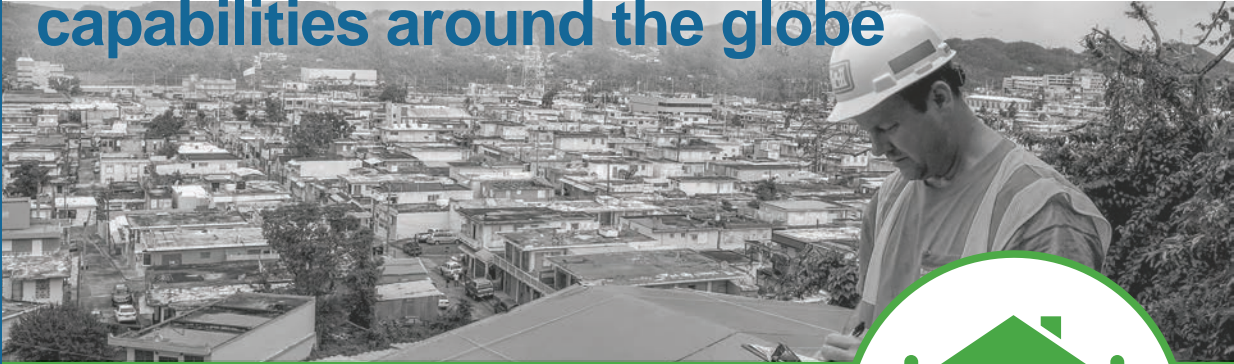
There are recreation facilities at most of the district's locks and dams. Facilities range from visitor centers, to interpretive displays, observation areas and information kiosks. These recreation areas are an **important component of the region's tourism.**



RECREATION

# Providing 21st century engineering capabilities around the globe

VALUE TO THE NATION



The U.S. Army Corps of Engineers is the world's premier engineering organization. The Corps provides engineering support to other federal, state and local agencies, as well as Tribes and more than 90 foreign nations, with a full range of planning, engineering, design/construction management, program management, real estate, research development and technical assistance services. This work ranges from constructing critical infrastructure, such as wastewater treatment plants, to assisting other nations with damages caused by disasters and war. The agency employs a wide range of engineers and scientists, many of whom are considered experts in their field.

## SUPPORT TO FEMA

Under the National Response Framework, the Corps of Engineers is assigned as the lead agency for Emergency Support Function No. 3, "Public Works and Engineering." During disasters, the Federal Emergency Management Agency can assign the Corps of Engineers missions to assist in the execution of recovery efforts. These missions include activities such as providing temporary housing, power, roofing and debris removal.

Being prepared for the next disaster is nothing new to the St. Paul District. The district maintains a temporary housing team that can **deploy in less than 24 hours**. This team has built housing sites and critical public facilities around the nation to include Louisiana, North Dakota, Iowa, Mississippi, Florida, Texas and Hawaii. Individual employees with specific technical skills also deploy to provide FEMA assistance as needed. In fact, district personnel have supported a majority of the most recent federally-declared disasters to include hurricanes, wildfires, floods, tornadoes and more.

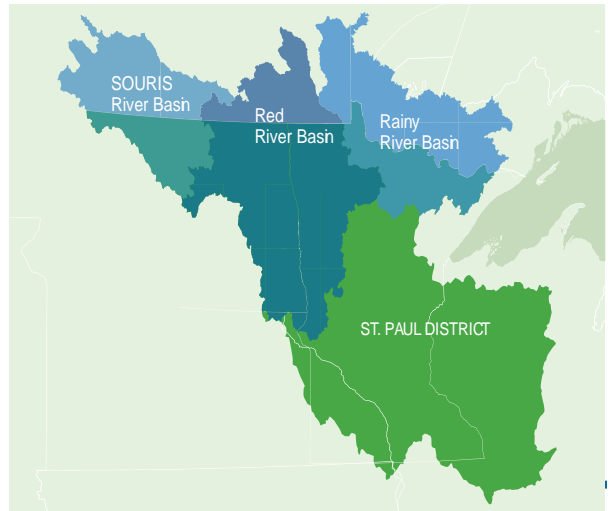
## TEMPORARY HOUSING TEAM



**COMPLETED 8 MISSIONS SINCE 2017**

## SUPPORT TO THE INTERNATIONAL JOINT COMMISSION

The International Joint Commission was created because the United States and Canada recognized that each country is affected by the other's actions in lake and river systems along the border. The two countries cooperate to manage these waters and to protect them for the benefit of today's citizens and future generations. The IJC assists in finding solutions to problems within these waters. The 1909 Boundary Waters Treaty established the Commission, which has six members. Three are appointed by the President of the United States, and three are appointed by the Governor in Council of Canada, with the advice of the Prime Minister. With more than 20 boards, the IJC has two main responsibilities: approving projects affecting water levels and flows across the boundary and investigating transboundary issues and recommending solutions. The St. Paul District commander co-chairs and the district supports four of these boards to include the International Rainy-Lake of the Woods Watershed Board, the International Lake of the Woods Control Board, the International Red River Watershed Board and the International Souris River Board.



## SUPPORT TO THE WARFIGHTER

One of the most unique capabilities the Corps of Engineers provides to the nation that is unlike any other military in the world is the synergy between its civil and military operations. In addition to the civil works program's contributions to economic development and environmental security, the Corps also applies its civil works expertise to support military missions and operations promoting peace and stability around the globe. In turn, civil works employees have an increased understanding and perspective as a result of their experiences supporting U.S. Army and other military organizations.

Corps of Engineers staff demonstrated this synergy most recently in post-conflict stability operations in Afghanistan and Iraq and post-disaster response operations. Since 2001, St. Paul District employees have volunteered nearly 150 times for deployments to Iraq and Afghanistan with. Their roles included rebuilding these nations' infrastructure to include water supply, sanitary systems, schools, hospitals, airports and more.





**US Army Corps  
of Engineers®**

St. Paul District

“The U.S. Army Corps of Engineers, St. Paul District, is a dedicated team that values 160 years of rich history in maintaining Upper Midwest values along the Mississippi River. A river that changes in many ways and yet seemingly remains the same. Our community continues to prosper from the Great River, and our efforts to tame it over the years is far reaching. We touch hundreds of towns and locals from Guttenberg, Iowa, to Minot, North Dakota, and we stretch as far west to the northwestern parts of North Dakota and east to the Great Lakes. Our mission continues to strengthen the nation’s economy, enable movement of goods and services, reduce flood and drought damages and restore and maintain ecosystems and recreational facilities for millions of people. We are proud of our district’s legacy that has faced old and new challenges and continues to serve our region with a great sense of duty and pride to meet the needs of our nation well into the future.”

Col. Matthew Chase  
68<sup>th</sup> District Engineer  
St. Paul District

PUBLIC AFFAIRS OFFICE  
332 MINNESOTA ST STE E1500  
ST PAUL, MN 55101-1323  
651.290.5807

[www.mvp.usace.army.mil](http://www.mvp.usace.army.mil)  
[facebook.com/usace.saintpaul](https://facebook.com/usace.saintpaul)  
[x.com/stpaulusace](https://x.com/stpaulusace)

